

## Instructions From Your Veterinarian/Veterinary Surgeon

Insulin: \_\_\_\_\_  
\_\_\_\_\_  
\_\_\_\_\_

Other Medications: \_\_\_\_\_  
\_\_\_\_\_  
\_\_\_\_\_

Diet: \_\_\_\_\_  
\_\_\_\_\_  
\_\_\_\_\_

Testing Frequency: \_\_\_\_\_  
\_\_\_\_\_  
\_\_\_\_\_

Comments: \_\_\_\_\_  
\_\_\_\_\_  
\_\_\_\_\_

## Partnering For Home Monitoring

Successfully managing a diabetic pet requires a high level of communication between the pet owner and the veterinarian/veterinary surgeon. With loving care from the pet owner and guidance from a veterinary surgeon, diabetic pets can live a normal lifespan and remain in good health.

You can be confident with the results obtained using the AlphaTRAK™ blood glucose monitoring system because it is calibrated to be accurate when testing blood glucose levels in cats and dogs.

For additional information, please contact:

Abbott Animal Health	Abbott Animal Health
Abbott Laboratories	Abbott Laboratories
Vanwall Business Park	200 Abbott Park Road
Vanwall Road	Abbott Park, Illinois
Maidenhead SL6 4XE	USA, 60064
Tel. 01628 644354	Tel. (888) 299-7416

## Quick User Guide

1. With meter powered off, insert a test strip into the meter until it stops (*Image A*).

*Note: Butterfly at the bottom of the strip should face up.*



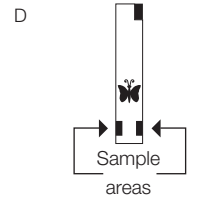
2. Press and release the “m” button to power on the meter. As the device powers on, it will display a code. The code displayed MUST match the dog or cat code listed on the test strip vial (*Image B*).



Change the code, if necessary, by pressing the “m” button to scroll down and the “c” button to scroll up.



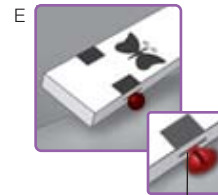
3. Wait for the blood drop and test strip symbol to appear on the display (*Image C*). Obtain a blood sample from the animal.



4. Gently touch only ONE sample area of the test strip to the blood sample (*Image D*).

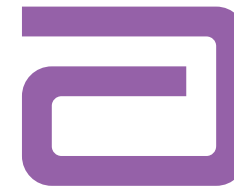
The test strip acts like a sponge and pulls the blood into the strip through the sample area.

Ensure the sample touches the thin side of the test strip in the black rectangular area (*Image E*). The test strip acts like a sponge and will pull the sample into the test strip. The meter will beep once when it has obtained an adequate sample.



Sample area of test strip

5. Wait for the result. The test is complete when the meter beeps twice and the test result is shown on the display screen (*Image F*).



AlphaTRAK™  
Blood Glucose Monitoring System

Quick User's Guide

AlphaTRAK™ is a portable blood glucose monitoring system validated for cats and dogs.



AlphaTRAK™  
BLOOD GLUCOSE  
MONITORING SYSTEM

Abbott  
Animal Health

AXALP2007054  
ALPHA-128

Date of preparation: July 2007  
©2007 Abbott Laboratories

Abbott  
A Promise for Life

## Preparing The Supplies

It is recommended to have the AlphaTRAK™ meter and all testing supplies on hand prior to obtaining a blood sample.

### 1. Collect testing supplies:

- AlphaTRAK™ Meter
- AlphaTRAK™ Test Strips
- AlphaTRAK™ Lancet
- Sterile Gauze/Cotton Wool or Cotton Ball
- Warming Cloth (optional)
- Petroleum Jelly (optional)

### 2. Insert the AlphaTRAK™ test strip into the AlphaTRAK™ meter and press “m” to power on the meter.

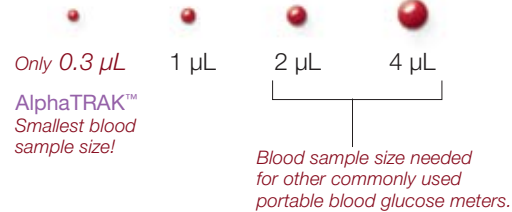
### 3. Confirm the code number displayed is appropriate for your pet. The code number must match “CODE DOG” or “CODE CAT” printed on the side of the test strip vial.



**AlphaTRAK™**  
BLOOD GLUCOSE  
MONITORING SYSTEM

## The Blood Sample Size

The AlphaTRAK™ Blood Glucose Monitoring System requires the world's smallest blood sample.



## Obtaining A Capillary Sample

1. Make sure the area is clean and dry.
2. Warming the area will help increase blood flow. (Optional: This can be done by applying a warm cloth to the site or by gently rubbing the area.)
3. Remove the round cover from the lancet and prick the sampling area. (Optional: A thin layer of petroleum jelly may be applied prior to lancing the site. This may help the blood form into a droplet.)
4. Touch one sample area of the test strip to the blood sample. The test strip acts like a sponge and will pull the sample into the strip.
5. Once you have obtained a result, apply gentle pressure to the area with a sterile gauze or cotton wool/cotton ball to help stop the blood flow.

## Capillary Sampling Areas



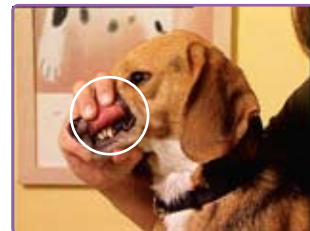
*Marginal ear vein in both cats and dogs*



*Paw pad in both cats and dogs*



*Leg callus, usually dogs*



*Inner or outer lip, dogs only*